

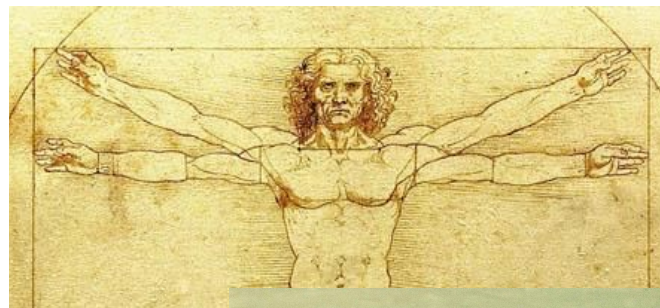
Mark Twain Elementary PTSA Presents

# The Renaissance Visual Arts

*Easy Step by Step for Grades K-5*



**Dates:** THURSDAYS, Oct. 1-Dec. 17  
(no class Oct 15 & Nov 26)  
**Time:** 3:00pm - 4:10pm  
**Place:** Mark Twain Cafeteria  
**Cost:** \$170 (includes \$45 for materials)\*  
**Discount:** 50% off tuition for siblings\*\*

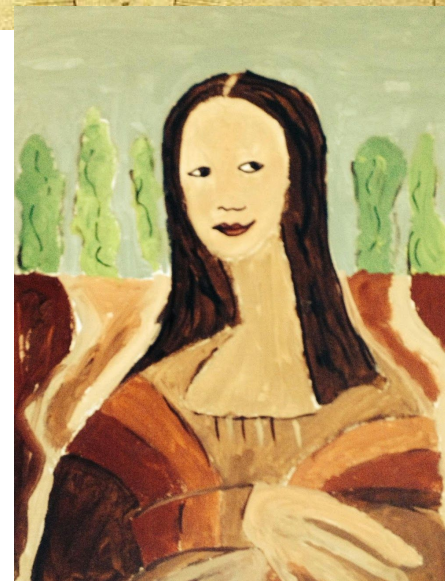


\*Total fee for two siblings is \$279, for three is \$385 - 50% off does not apply to materials.

\*\* Low income discount available for qualified families.

The subject of the fall session is THE RENAISSANCE. We will start with LEONARDO DA VINCI and paint the MONA LISA (the most famous painting ever!) on canvas. We will then continue on to paint THE LAST SUPPER (where one point perspective was invented) and THE RENAISSANCE MAN. Our next artist will be MICHELANGELO, and we will paint THE CREATION from the SISTINE CHAPEL. We will then create DAVID'S HEAD in a sculpture made of clay.

We will combine techniques of space composition light and shadow, one-point perspective, two-point perspective and creating depth and 3D. We will use pencils, charcoals, soft pastels, oil pastels, watercolor, acrylic, clay, and foil.



*This Mona Lisa was painted by a student!*

**To register:** fill out and detach the registration form below, attach a check payable to Mark Twain PTSA, and send both to the front office. Send a snack with your child and pick up promptly at 4:10pm.

Student's Name \_\_\_\_\_ School \_\_\_\_\_ Grade \_\_\_\_\_

Parent's Name \_\_\_\_\_ Phone (\_\_\_\_\_) \_\_\_\_\_ Teacher \_\_\_\_\_

Address \_\_\_\_\_

E-Mail address \_\_\_\_\_ Emergency Contact \_\_\_\_\_

PLEASE NOTE: For safety purposes, one PTSA Parent is required to stay during each class. If we do not have parent volunteers, we will be forced to cancel the session.

I will stay during one class. I am a PTSA member and LWSD approved volunteer.

### **Mark Twain After School Programs Refund and Behavior Policy**

**Refunds:** A full refund will be granted to any student who withdraws up to 2 days after the first class. Otherwise, no refunds unless initiated by PTSA.

**Behavior Policy:** Mark Twain PTSA organizes after school programs to offer students enrichment programs conveniently located at the school. However, for us to continue to offer these programs we must have one PTSA member stay to assist the instructor at each session. We must also insist that students respect the instructor and act in an appropriate manner, and that guardians be on time to pick up students at the end of each session.

If your student has behavior issues which are disruptive to the class, or is not picked up in a timely manner, we will issue you a warning. If there is a second incident, we will be forced to terminate your student's participation in the program. A refund for remaining sessions will not be granted.

Thank you for your cooperation.